



Department for  
Digital, Culture,  
Media & Sport

**APPLICANT PACK**

# Cultural/Academic Trustee National Gallery

# Contents

- 1. Public Appointments**
- 2. The National Gallery**
- 3. The Role of Trustees**
- 4. Essential Criteria**
- 5. Desirable criteria**
- 6. Key dates**
- 7. How to apply**
- 8. Eligibility**
- 9. Contact us**

## Public Appointments

The National Gallery (“the Gallery”) is a charity and Non-Departmental Public Body sponsored by the Department for Culture, Media and Sport. The Gallery seeks an Academic/Cultural Trustee for appointment in 2023

DCMS is committed to eliminating discrimination and advancing equality of opportunity in its public appointments. We particularly encourage applicants from underrepresented groups, those based outside London and the South-East and applicants who have achieved success through non-traditional educational routes. This ensures that boards of public bodies benefit from a full range of diverse perspectives and are representative of the people they serve.



# The National Gallery

The Gallery is a public museum with a uniquely important collection of pictures which it holds for the benefit of all. It constitutes a living legacy of humanity's highest cultural achievements in painting and is an inestimable resource for understanding the world as we have inherited it. Established in 1824, the Gallery's statutory responsibilities including caring for and adding to the collection; displaying the collection to the public and making it available for the purpose of research and study; and generally promoting the public's enjoyment and understanding of painting and fine art. From its inception it has been free for all to visit, and the Gallery believes that free admission represents a commitment to the public which must be reaffirmed and developed.

Covid-19 had far reaching consequences for the Gallery, although visitor numbers are now recovering strongly, and it is hoped they will recover to pre-pandemic levels by 2024, when the Gallery will be celebrating its bicentenary. Planning permission has been granted for a suite of capital projects: NG200 Welcome, which will transform the public's experience of the Sainsbury Wing alongside major improvements to the Pigott Education Centre, Jubilee Walk and the surrounding public realm and the creation of a Research Centre and new Supporters' House. In addition, an ambitious bicentenary programme of events will reach out across the Nation, the World and at the Gallery's home in Trafalgar Square, London.

Further information about the Gallery (including a list of current Trustees) can be found on its website at [www.nationalgallery.org.uk](http://www.nationalgallery.org.uk).

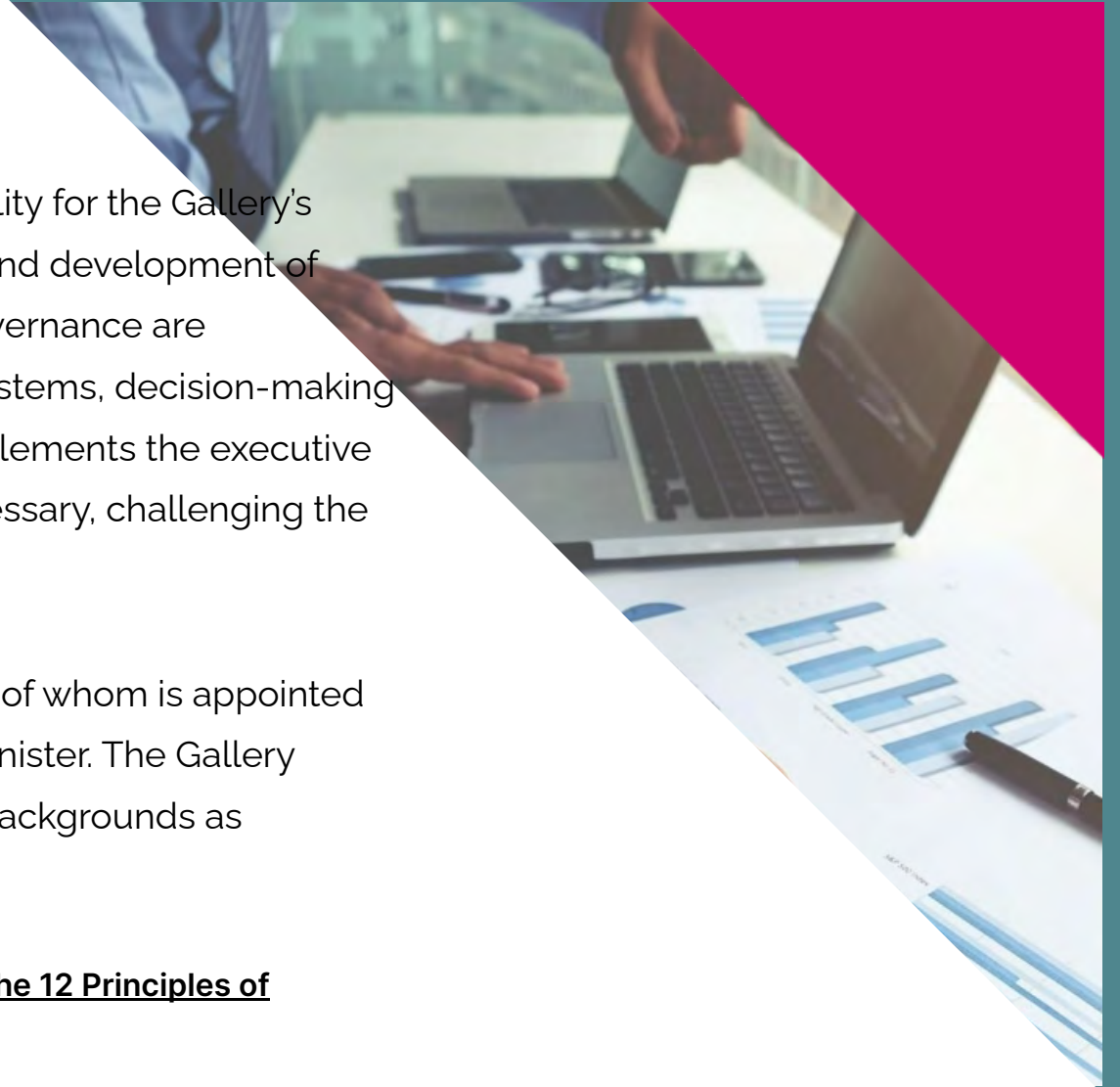


# The Role of Trustees

The role of the Board of the Gallery includes responsibility for the Gallery's statutory functions; the provision of overall leadership and development of strategy. It ensures that high standards of corporate governance are maintained and that the Gallery has effective control systems, decision-making processes and management in place. The Board complements the executive by providing support and advice while also, where necessary, challenging the status quo.

The Board consists at any time of 12 to 14 Trustees, one of whom is appointed by the Board of Tate and the remainder by the Prime Minister. The Gallery wishes to draw its Trustees from as diverse a range of backgrounds as possible.

**Trustees must adhere to the Seven Principles of Public Life, the 12 Principles of Governance.**



# Essential Criteria

All Applicants to this Trustee role will be required to demonstrate the below qualities in their application:

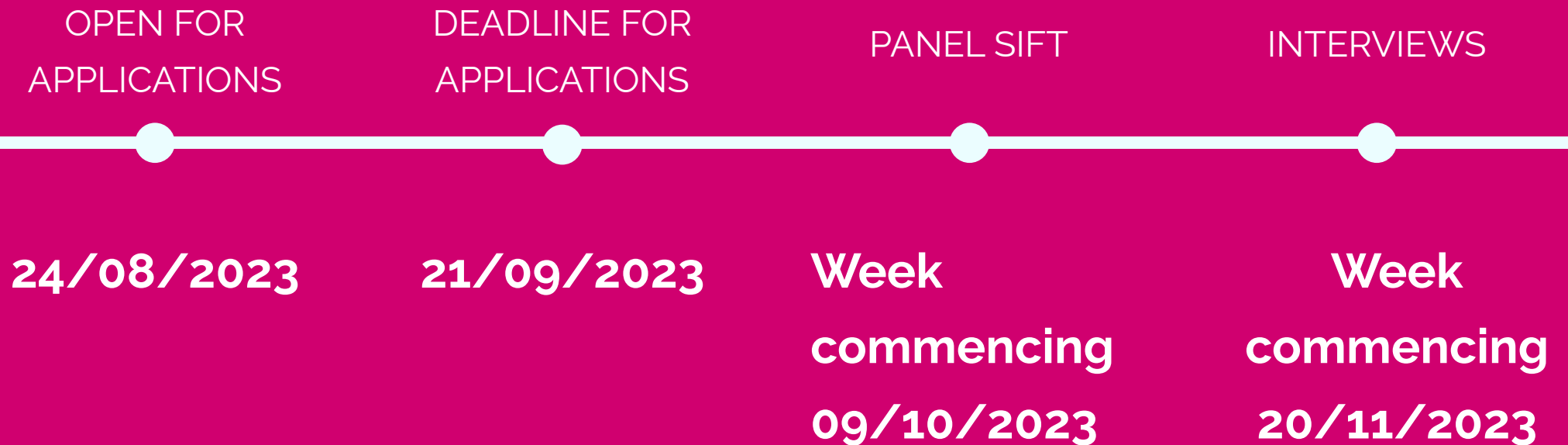
- A demonstrable interest in the National Gallery and love of paintings and art;
- Academic experience which may include links to the world of scholarship; AND/OR Prominence in the cultural field, preferably with a broad understanding of the collection;
- Excellent judgement and the ability to contribute to Board discussion and strategy and policy development;
- Excellent communication skills and the ability to represent and advocate for the Gallery;
- The ability to work collaboratively with other Trustees and senior management of the Gallery;
- A commitment to improving opportunities for people throughout the UK and access to people from a diverse range of backgrounds.

# Desirable Criteria

In addition to the essential criteria outlined above, candidates for the Trustee roles should be able to demonstrate the below desirable criteria:

- An understanding of the importance of fundraising to the Gallery and a commitment to contribute to the delivery of the Gallery's fundraising ambitions

# Key dates



Please note these times are subject to change.





## STEP 1

### **CV**

on no more than 2 sides of A4



## STEP 2

### **Statement of suitability**

Describe how you meet the criteria for this role, on 2 sides of A4.



## STEP 3

A Conflict of Interest form and a Disability Monitoring Form available on the advert page..

# How to apply

Completed applications should be submitted online. Any queries should be emailed to:

[publicappointments@dcms.gov.uk](mailto:publicappointments@dcms.gov.uk)

Please put National Gallery Trustee in the Subject line.



This appointments process adheres to the Cabinet Office Governance Code on Public Appointments, which is regulated by the Commissioner for Public Appointments.

#### **Eligibility Criteria**

You cannot be considered for a public appointment if:

you become bankrupt or make an arrangement with a creditor

your estate has been sequestrated in Scotland or you enter into a debt arrangement programme under Part 1 of the Debt Arrangement and Attachment (Scotland) Act 2002 (asp 17) as the debtor or have, under Scots law, granted a trust deed for creditors;

you are disqualified from acting as a company director under the Company Directors Disqualification Act 1986;

you have been convicted of a criminal offence, the conviction not being spent for the purposes of the Rehabilitation of Offenders Act 1974 (c. 53);

you become subject to a debt relief order or a bankruptcy restrictions order;

you fail to declare any conflict of interest.

#### **Conflicts of Interest and Due Diligence**

If you have any interests that might be relevant to the work of The Gambling Commission, and which could lead to a real or perceived conflict of interest if you were to be appointed, please provide details in your application. If you have queries about this and would like to discuss further please contact the Public Appointments Team.

Given the nature of public appointments, it is important that those appointed as members of public bodies maintain the confidence of Parliament and the public. If there are any issues in your personal or professional history that could, if you were appointed, be misconstrued, cause embarrassment, or cause public confidence in the appointment to be jeopardised, it is important that you bring them to the attention of the Advisory Assessment Panel and provide details of the issue(s) in your application. In considering whether you wish to declare any issues, you should also reflect on any public statements you have made, including through social media.

As part of our due diligence checks we will consider anything in the public domain related to your conduct or professional capacity. This will include us undertaking searches of previous public statements and social media, blogs or any other publicly available information. This information may be made available to the Advisory Assessment Panel and they may wish to explore issues with you should you be invited to interview. The information may also be shared with ministers and the Cabinet Office.

---

Contact us

Interested in  
other DCMS  
Appointments?

PUBLIC APPOINTMENTS TEAM

[publicappointments@dcms.gov.uk](mailto:publicappointments@dcms.gov.uk)

Campaign Manager: Victoria Watts

[victoria.watts@dcms.gov.uk](mailto:victoria.watts@dcms.gov.uk)

JOIN THE DCMS PUBLIC  
APPOINTMENTS NETWORK

Hear about vacancies that match your  
interests, attend events, and more.

[Click here](#) or email the address  
above.